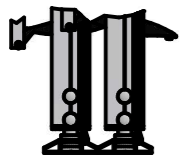
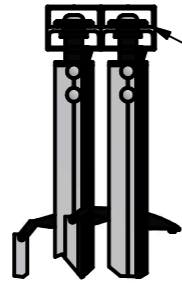


6 | 1 | 5 | 1 | 4 | 1 | 3 | 1 | 2 | 1 | 1



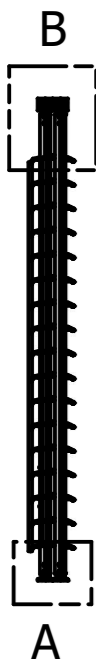
DETAIL A
SCALE 1 / 7



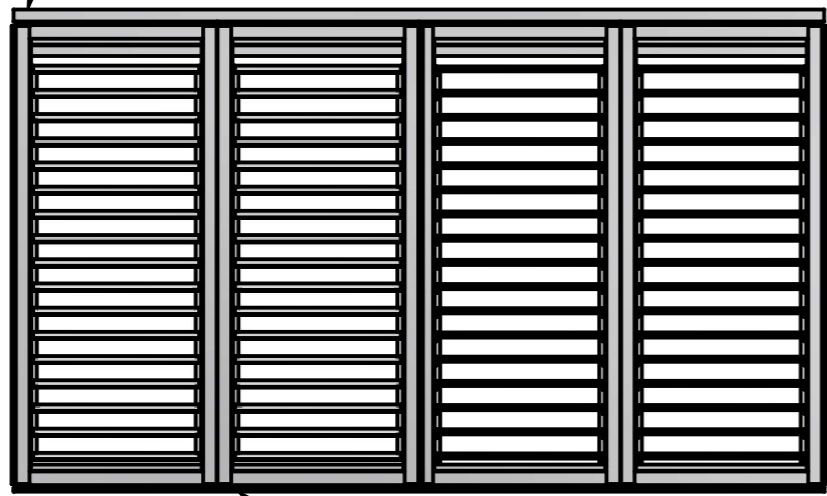
DETAIL B
SCALE 1 / 7

FIXING OF TOP TRACK FIRST WITH PANELS THEN BOTTOM TRACK
OR OVER 3000 ALLOW FOR 1000 INSERT TO ALLOW FOR
PANEL INSTALLATION

CL USE 75 BATTEN SCREWS DLI USE 50-70 SQUARE DRIVE SCREWS
FIXINGS TO BE 50 FROM END THEN SECOND 100C/C
WITH ADDITIONAL FIXING 1 SCREW PER PANNEL
THEN 500 C/C

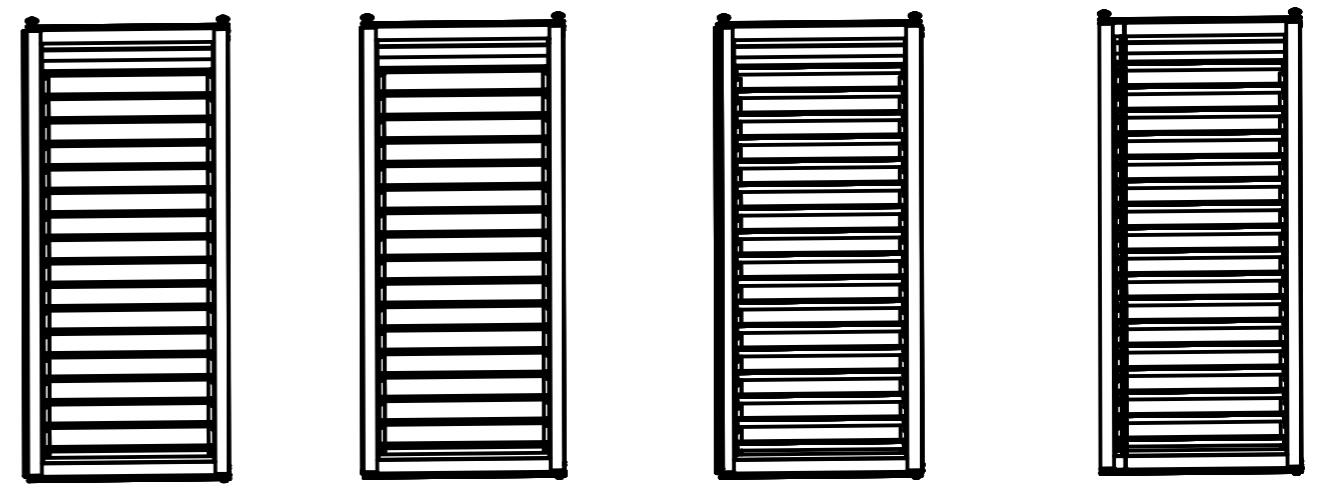


SIDE VIEW



FRONT VIEW

FIXING TO BE 50 FROM END SECOND TO BE 100C/C THEN 600C/C



EXPLODED FRONT VIEW

D

D

C

C

B

B

A

A

ACKNOWLEDGEMENT ALL DIMENSIONS IN mm. UNLESS THERWISE STATED LINEAR AND ANGULAR TOLERANCES AS SPECIFIED © OZROLL 2018	Designed by mjarvis	Checked by GVH	Approved by A3	Date 20/11/2018	SCALE: NTS		 OZ ROLL PRODUCTS 4/145 QUINNS HILL ROAD EAST STAPYLTON QLD 4207 PH.073393 3355
	ADDRESS				DLI- SLIDER (INSTALLATION)		
	DWG No.				Edition A	Sheet 1 / 1	

6 | 1 | 5 | 1 | 4 | 1 | 3 | 1 | 2 | 1 | 1