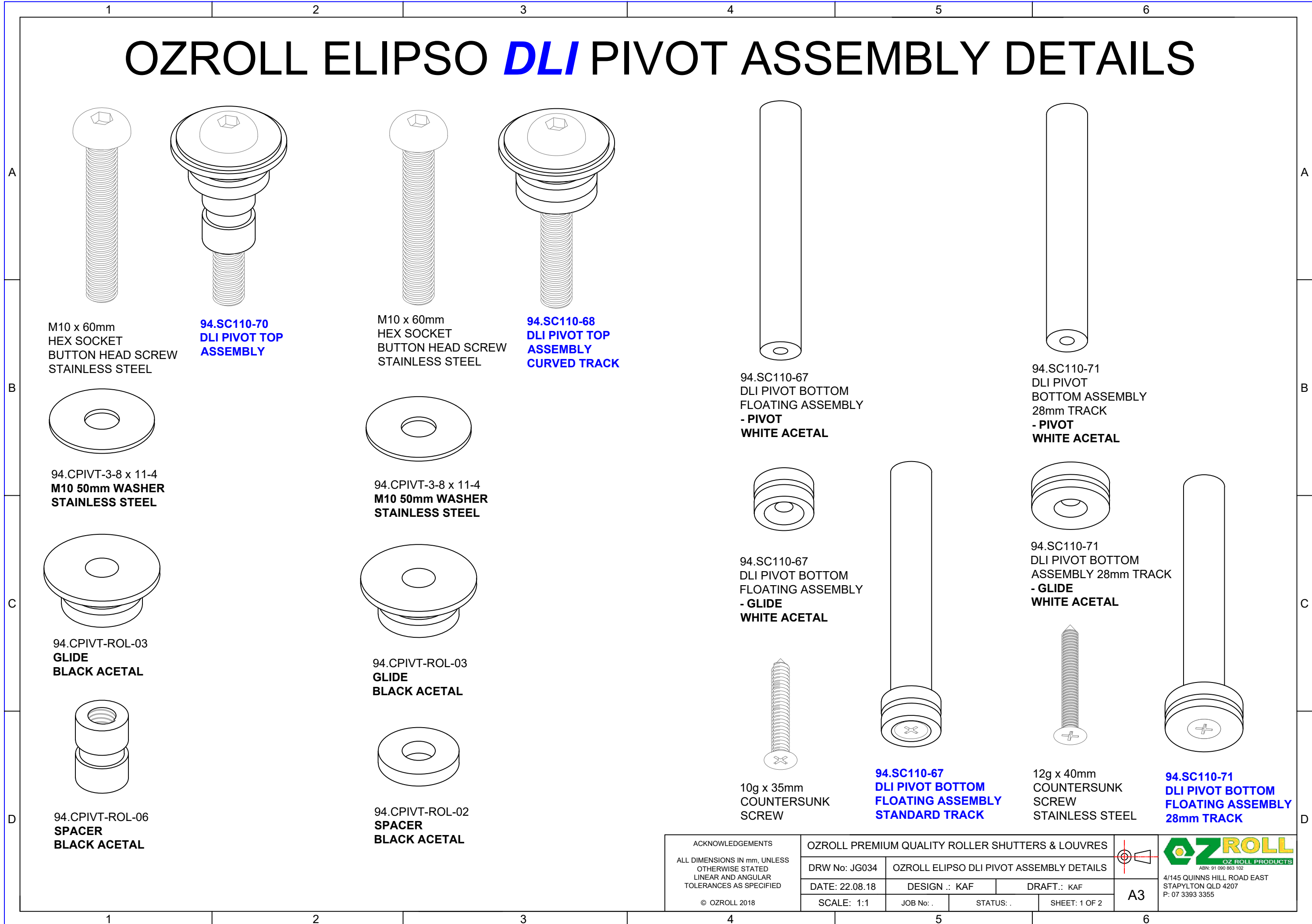


OZROLL ELIPSO *DLI* PIVOT ASSEMBLY DETAILS



M10 x 60mm
HEX SOCKET
BUTTON HEAD SCREW
STAINLESS STEEL

**94.SC110-70
DLI PIVOT TOP
ASSEMBLY**

M10 x 60mm
HEX SOCKET
BUTTON HEAD SCREW
STAINLESS STEEL

**94.SC110-68
DLI PIVOT TOP
ASSEMBLY
CURVED TRACK**

94.SC110-67
DLI PIVOT BOTTOM
FLOATING ASSEMBLY
- PIVOT
WHITE ACETAL

94.SC110-71
DLI PIVOT
BOTTOM ASSEMBLY
28mm TRACK
- PIVOT
WHITE ACETAL

94.CPIVT-3-8 x 11-4
M10 50mm WASHER
STAINLESS STEEL

94.CPIVT-3-8 x 11-4
M10 50mm WASHER
STAINLESS STEEL

94.SC110-67
DLI PIVOT BOTTOM
FLOATING ASSEMBLY
- GLIDE
WHITE ACETAL

94.SC110-71
DLI PIVOT BOTTOM
ASSEMBLY 28mm TRACK
- GLIDE
WHITE ACETAL

94.CPIVT-ROL-03
GLIDE
BLACK ACETAL

94.CPIVT-ROL-03
GLIDE
BLACK ACETAL

10g x 35mm
COUNTERSUNK
SCREW

**94.SC110-67
DLI PIVOT BOTTOM
FLOATING ASSEMBLY
STANDARD TRACK**

12g x 40mm
COUNTERSUNK
SCREW
STAINLESS STEEL

**94.SC110-71
DLI PIVOT BOTTOM
FLOATING ASSEMBLY
28mm TRACK**

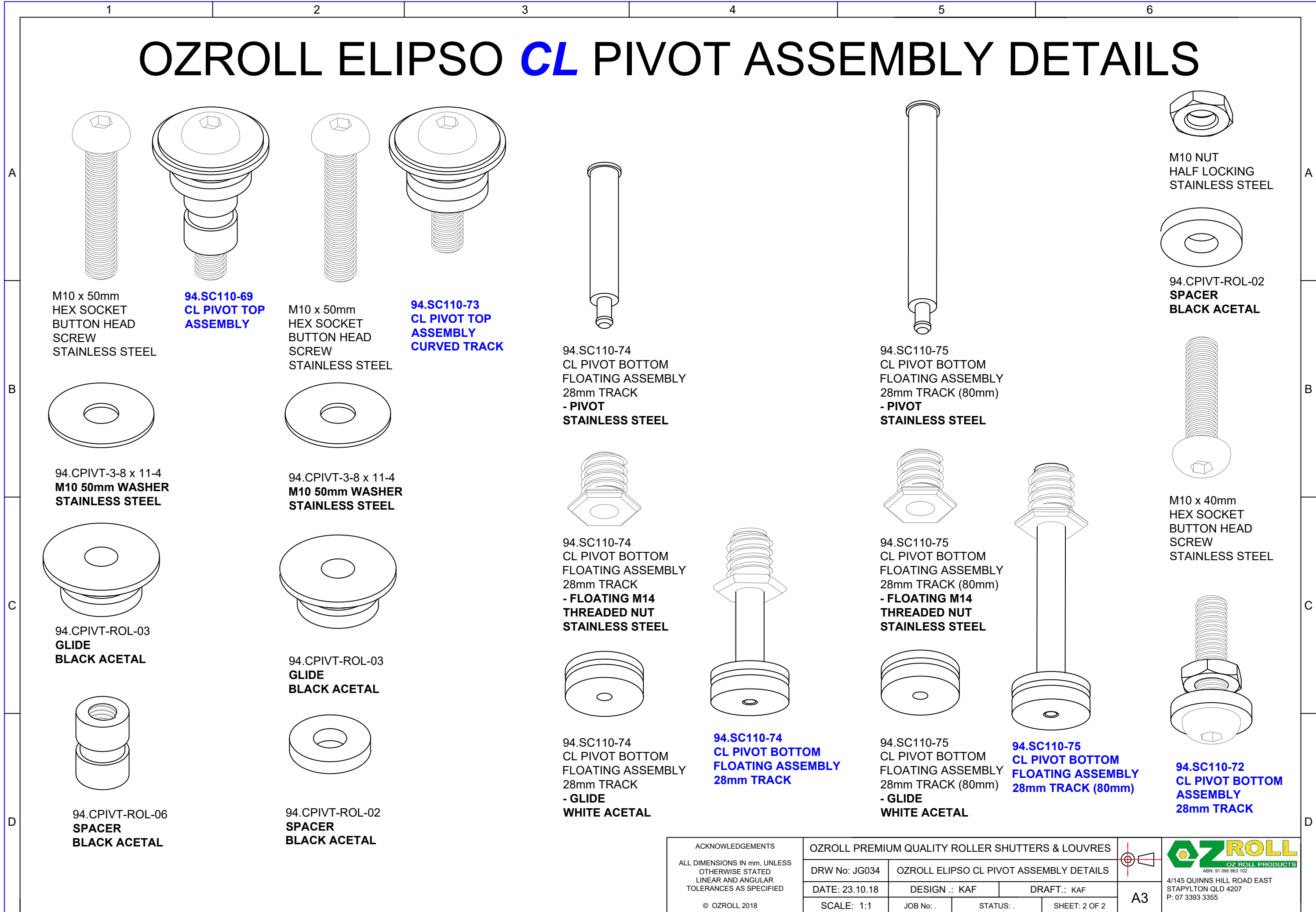
94.CPIVT-ROL-06
SPACER
BLACK ACETAL

94.CPIVT-ROL-02
SPACER
BLACK ACETAL

ACKNOWLEDGEMENTS ALL DIMENSIONS IN mm, UNLESS OTHERWISE STATED LINEAR AND ANGULAR TOLERANCES AS SPECIFIED © OZROLL 2018	OZROLL PREMIUM QUALITY ROLLER SHUTTERS & LOUVRES			OZ ROLL PRODUCTS ABN: 91 090 863 102 4/145 QUINNS HILL ROAD EAST STAPYLTON QLD 4207 P: 07 3393 3355
	DRW No: JG034	OZROLL ELIPSO DLI PIVOT ASSEMBLY DETAILS		
	DATE: 22.08.18	DESIGN .: KAF	DRAFT.: KAF	
	SCALE: 1:1	JOB No: .	STATUS: .	SHEET: 1 OF 2

A3

OZROLL ELIPSO **CL** PIVOT ASSEMBLY DETAILS



M10 x 50mm
HEX SOCKET
BUTTON HEAD
SCREW
STAINLESS STEEL

**94.SC110-69
CL PIVOT TOP
ASSEMBLY**

M10 x 50mm
HEX SOCKET
BUTTON HEAD
SCREW
STAINLESS STEEL

**94.SC110-73
CL PIVOT TOP
ASSEMBLY
CURVED TRACK**

94.SC110-74
CL PIVOT BOTTOM
FLOATING ASSEMBLY
28mm TRACK
- PIVOT
STAINLESS STEEL

94.SC110-75
CL PIVOT BOTTOM
FLOATING ASSEMBLY
28mm TRACK (80mm)
- PIVOT
STAINLESS STEEL

M10 NUT
HALF LOCKING
STAINLESS STEEL

94.CPIVT-ROL-02
SPACER
BLACK ACETAL

94.CPIVT-3-8 x 11-4
M10 50mm WASHER
STAINLESS STEEL

94.CPIVT-3-8 x 11-4
M10 50mm WASHER
STAINLESS STEEL

94.SC110-74
CL PIVOT BOTTOM
FLOATING ASSEMBLY
28mm TRACK
- FLOATING M14
THREADED NUT
STAINLESS STEEL

94.SC110-75
CL PIVOT BOTTOM
FLOATING ASSEMBLY
28mm TRACK (80mm)
- FLOATING M14
THREADED NUT
STAINLESS STEEL

M10 x 40mm
HEX SOCKET
BUTTON HEAD
SCREW
STAINLESS STEEL

94.CPIVT-ROL-03
GLIDE
BLACK ACETAL

94.CPIVT-ROL-03
GLIDE
BLACK ACETAL

94.SC110-74
CL PIVOT BOTTOM
FLOATING ASSEMBLY
28mm TRACK
- GLIDE
WHITE ACETAL

94.SC110-75
CL PIVOT BOTTOM
FLOATING ASSEMBLY
28mm TRACK (80mm)
- GLIDE
WHITE ACETAL

94.SC110-72
CL PIVOT BOTTOM
ASSEMBLY
28mm TRACK

94.CPIVT-ROL-06
SPACER
BLACK ACETAL

94.CPIVT-ROL-02
SPACER
BLACK ACETAL

**94.SC110-74
CL PIVOT BOTTOM
FLOATING ASSEMBLY
28mm TRACK**

**94.SC110-75
CL PIVOT BOTTOM
FLOATING ASSEMBLY
28mm TRACK (80mm)**

ACKNOWLEDGEMENTS ALL DIMENSIONS IN mm, UNLESS OTHERWISE STATED LINEAR AND ANGULAR TOLERANCES AS SPECIFIED © OZROLL 2018	OZROLL PREMIUM QUALITY ROLLER SHUTTERS & LOUVRES			OZ ROLL PRODUCTS ABN: 91 090 863 102 4/145 QUINNS HILL ROAD EAST STAPYLTON QLD 4207 P: 07 3393 3355
	DRW No: JG034	OZROLL ELIPSO CL PIVOT ASSEMBLY DETAILS		
	DATE: 23.10.18	DESIGN: KAF	DRAFT: KAF	
	SCALE: 1:1	JOB No: .	STATUS: .	

A3